

**DOCUMENT DATA**

ACADIAN TIMBER GP INC.  
DOCUMENT No. 21647343 (L7)  
DATED: JANUARY 24, 2006  
REGISTERED: JANUARY 27, 2006

**COORDINATE TABLE**

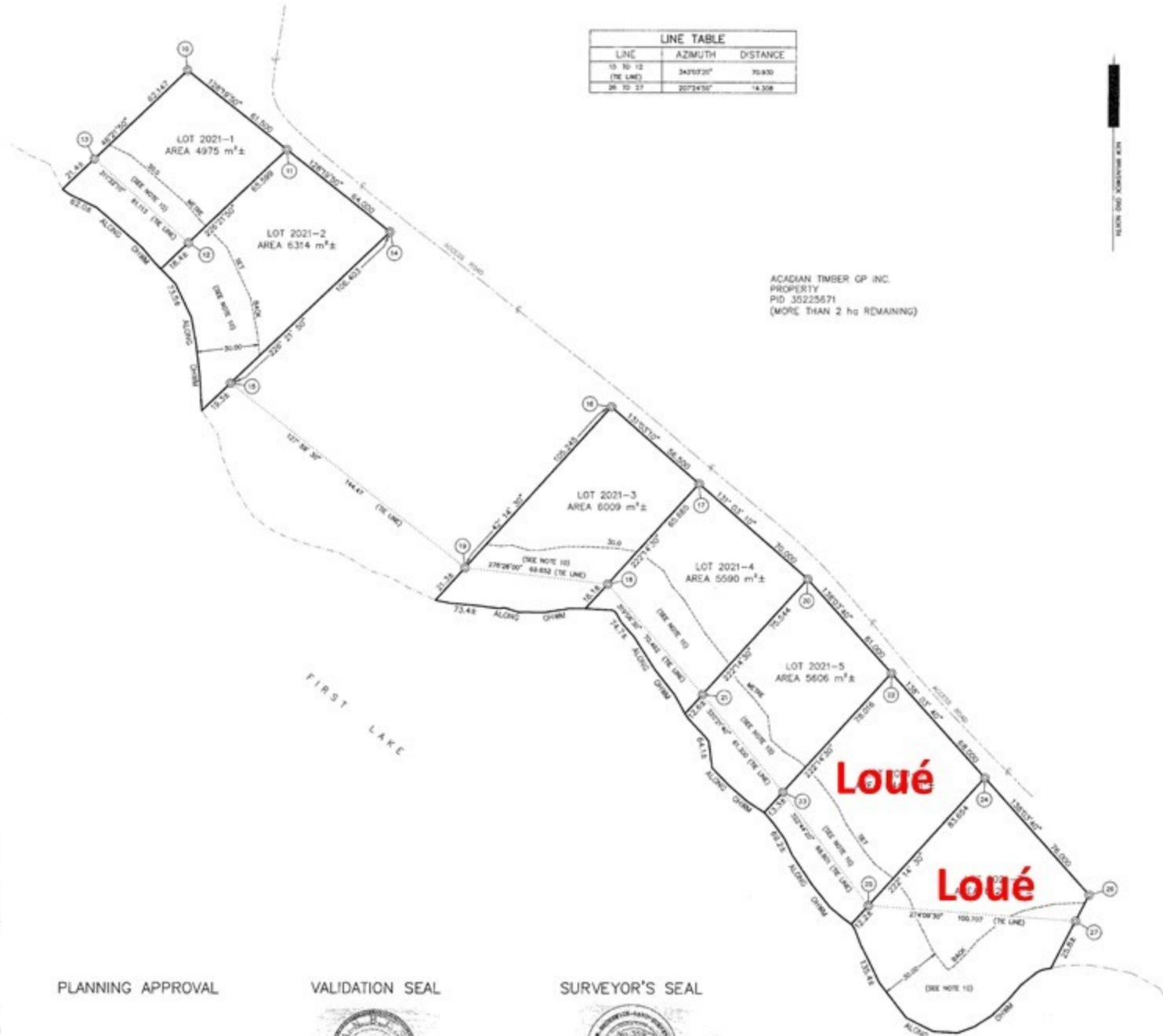
POINT	EASTING	NORTHING
10	2365368.813	762951.368
11	2365444.857	762913.257
12	2365367.380	762967.989
13	2365351.436	762968.512
14	2365495.082	762973.985
15	2365418.054	762950.138
16	2365602.683	762949.127
17	2365645.270	762945.020
18	2365601.125	762945.406
19	2365531.912	762941.217
20	2365636.057	762946.046
21	2365647.273	762950.179
22	2365738.825	762940.670
23	2365686.578	762932.913
24	2365754.271	762930.188
25	2365758.093	762948.196
26	2365826.054	762923.154
27	2365828.478	762940.893
27948	2415213.153	755828.602

**NOTES**

- DISTANCES SHOWN ON THIS PLAN ARE ADJUSTED GRID HORIZONTAL DISTANCES. GROUND DISTANCES CAN BE COMPUTED BY DIVIDING THE GRID DISTANCES BY A CORRECTED SCALE FACTOR OF 1.000 000.
- DIRECTIONS ARE ROUNDED TO NEAREST 10 SECONDS AND DERIVED FROM MONUMENT SYSTEMS.
- DISTANCES ARE EXPRESSED IN METRES AND DECIMALS THEREOF.
- DISTANCES AND DIRECTIONS ARE CALCULATED UNLESS OTHERWISE NOTED.
- ADJACENT PROPERTY INFORMATION SHOWN FOR IDENTIFICATION PURPOSES ONLY AND SHOULD NOT BE USED FOR LEGAL DESCRIPTION.
- CERTIFICATION IS NOT MADE AS TO LEGAL TITLE, NOR TO THE ZONING BY-LAWS OR REGULATIONS.
- ALL DOCUMENTS AND PLANS REFERENCED ARE FILED IN THE MADAGASCAR COUNTY REGISTRY OFFICE OR IN THE PROVINCIAL LAND TILES REGISTRY UNLESS OTHERWISE NOTED.
- COORDINATES SHOWN ON THIS PLAN ARE BASED ON THE NEW BRUNSWICK STEREORAPHIC DOUBLE PROJECTION AND THE NAD83 (CSRS) REFERENCE SYSTEM, AS REALIZED BY SERVICE NEW BRUNSWICK COORDINATE SURVEY MONUMENTS.
- ORDINARY HIGH WATER MARK WAS DETERMINED BY SCALING FROM SERVICE NEW BRUNSWICK PROPERTY MAPPING AND BY FIELD SURVEY ON JULY 15, 2005.
- ALL THAT PORTION OF LOTS 2021-1 TO 2021-7 WITHIN 75.0 METRES OF THE ORDINARY HIGH WATER MARK ARE SUBJECT TO REGULATION 80-80, WATERCOURSE AND WETLAND ALTERATION REGULATION OF THE CLEAN WATER ACT.
- COORDINATES ON THIS PLAN ARE DERIVED FROM DIFFERENTIAL GPS OBSERVATION COLLECTED WITH LEICA VIVA, DUAL FREQUENCY RECEIVERS, USING RAPID STATIC GPS SURVEY TECHNIQUES.

**LINE TABLE**

LINE	AZIMUTH	DISTANCE
15 TO 12 (THE LINE)	347°07'30"	70.830
26 TO 27	207°34'50"	14.308



ACADIAN TIMBER GP INC.  
PROPERTY  
PID 35225671  
(MORE THAN 2 ha REMAINING)

PLANNING APPROVAL

VALIDATION SEAL

SURVEYOR'S SEAL



**KEY PLAN**



DESIGNATED HIGHWAYS - MAP 58 SCALE: 1:80000

**PLAN OF SURVEY**  
SHOWING

FIRST LAKE  
CAMPSITE GROUP LEASES  
LOTS 2021-1 TO 2021-7  
PARISH OF SAINT-JACQUES  
COUNTY OF MADAGASCAR  
PROVINCE OF NEW BRUNSWICK

**LEGEND**

- STANDARD SURVEY MARKER PLAZED
- STANDARD SURVEY MARKER FOUND
- IRON BAR FOUND (ROUND)
- IRON PIPE FOUND
- WOOD POST FOUND
- FENCE
- SURVEYED LAND BOUNDARY THIS CALCULATED COORDINATE POINT
- COORDINATE POINT REFERENCE VALUE CALLED FOR IN DOCUMENT
- SQUARE METRES
- HECTARE
- UTILITY POLE
- UTILITY WIRE
- APPROXIMATE PROPERTY LINE
- UTILITY LINES
- SERVICE NEW BRUNSWICK (SMB) PROPERTY IDENTIFIER
- DNB MONUMENT
- LAND TILES
- REGISTRY
- THE LINE
- ORDINARY HIGH WATER MARK
- CHWM
- 30.0 METRE SET BACK
- ACCESS ROAD CENTRE LINE



**W.E. HODGES SURVEYS LTD.**  
SURVEYING & CONSULTING ENGINEERING SERVICES  
REGISTERED WITH ANSLS, ACSL & APECSB

71 DAVIS MILL ROAD PHONE 563-6812  
252 DRUMMOND, NB FAX 563-6448  
EDY 1P3 EMAIL: w.e.hodges@w.e.hodges.com

SURVEYED BY: WYME E. HODGES FILE NO.: 4718-2 CAD NO.: 4718-2  
SURVEY DATE: 2005/07/26 - 2005/07/28 PLAN DATE: 2005/07/28 SHEET NO.: 4718-2-01