

DOCUMENT DATA

ACADIAN TIMBER GP INC
 DOCUMENT No. 26674524 (LT)
 DATED DECEMBER 18, 2008
 REGISTERED JANUARY 02, 2009

CURVE DATA

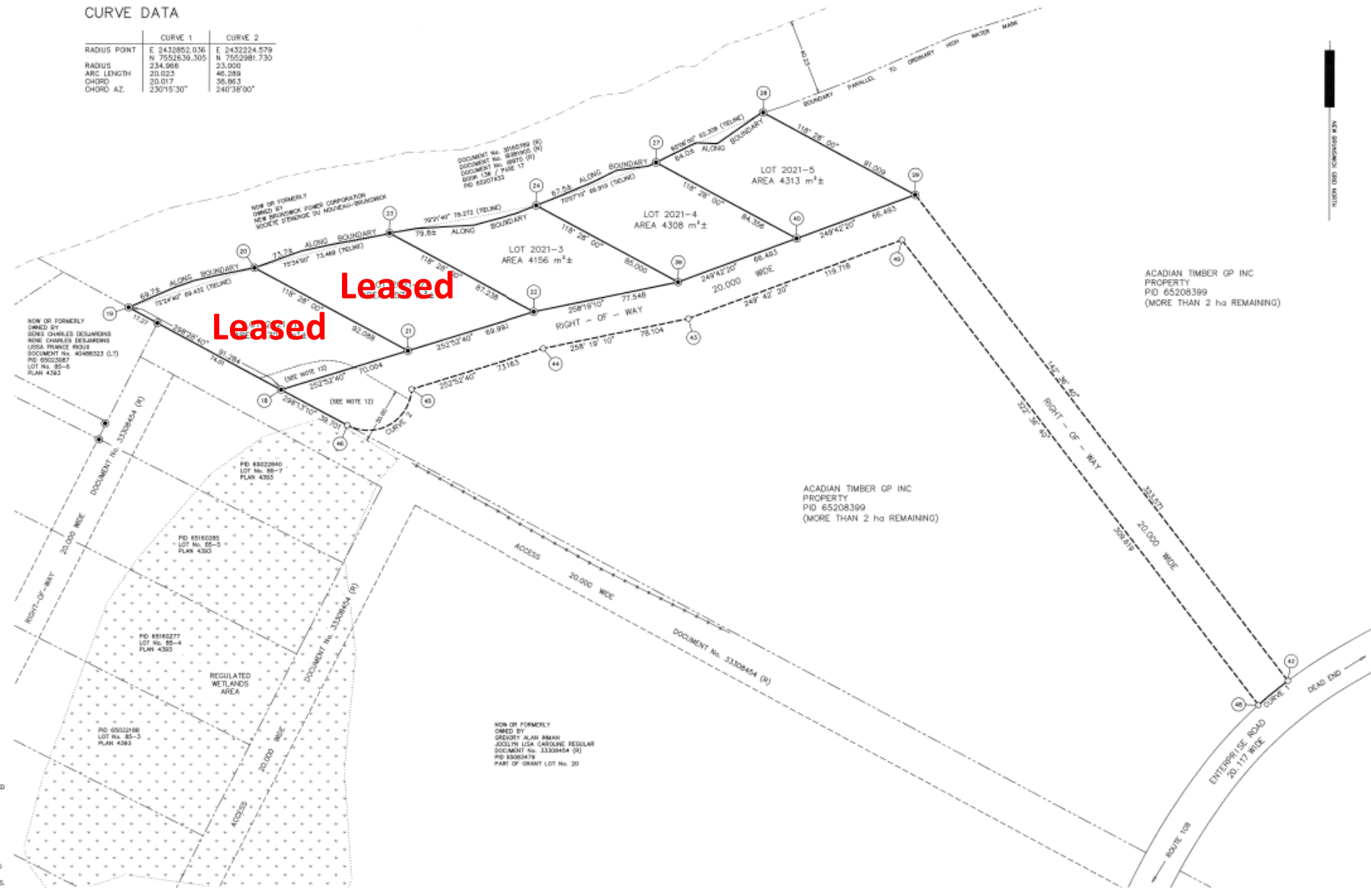
	CURVE 1	CURVE 2
RADIUS POINT	E 2432852.036 N 7552639.305	E 2432224.579 N 7552981.730
RADIUS	234.998	233.000
ARC LENGTH	20.023	46.289
CHORD	20.017	38.863
CHORD AZ.	230°15'30"	240°38'00"

COORDINATE TABLE

POINT	EASTING	NORTHING
18	2432078.696	7552980.251
19	2432098.456	7552633.775
20	2432164.642	7552444.758
21	2432245.596	7552660.862
22	2432312.407	7552021.470
23	2432325.797	7552663.052
24	2432313.707	7552077.686
27	2432376.637	7552100.449
28	2432433.154	7552126.675
29	2432503.160	7552083.295
36	2432388.430	7552071.171
40	2432490.795	7552060.133
42	2432709.645	7552028.212
43	2432393.954	7552077.890
44	2432317.467	7552082.077
45	2432247.548	7552880.535
46	2432211.676	7552261.470
48	2432094.254	7552913.414
49	2432506.240	7552058.413
24896	2432423.528	7548953.893
27450	2432358.432	7544743.970

NOTES

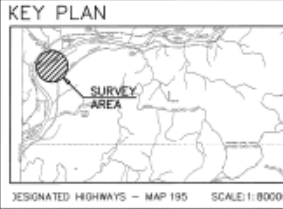
- DISTANCES SHOWN ON THIS PLAN ARE ADJUSTED GRID HORIZONTAL DISTANCES. GROUND DISTANCES CAN BE COMPUTED BY APPLYING THE GRID DISTANCES BY A COMBINED SCALE FACTOR OF 0.999 996.
- DIRECTIONS ARE RELATED TO NEAREST 10 SECONDS AND DERIVED FROM MONUMENTS 24666 AND 27450.
- DISTANCES ARE EXPRESSED IN METRES AND DECIMALS THEREOF.
- DISTANCES AND DIRECTIONS ARE CALCULATED UNLESS OTHERWISE NOTED.
- ADJACENT PROPERTY INFORMATION SHOWN FOR IDENTIFICATION PURPOSES ONLY AND SHOULD NOT BE USED FOR LEGAL DESCRIPTION.
- CERTIFICATION IS NOT MADE AS TO LEGAL TITLE, NOR TO THE ZONING BY-LAW OR REGULATIONS.
- ALL DOCUMENTS AND PLANS REFERENCED ARE FILED IN THE VICTORIA COUNTY REGISTRY OFFICE OR IN THE PROVINCIAL LAND TITLES REGISTRY.
- COORDINATES SHOWN ON THIS PLAN ARE BASED ON THE NEW BRUNSWICK STEREOGRAPHIC DOUBLE PROJECTION AND THE NAD83 (CGRS) REFERENCE SYSTEM, AS REALIZED BY SERVICE NEW BRUNSWICK COORDINATE SURVEY MONUMENTS.
- SOME EVIDENCE SHOWN ON THIS PLAN IS FROM PREVIOUS SURVEYS IN THE AREA.
- ORDINARY HIGH WATER MARK WAS DETERMINED BY FIELD SURVEY ON JULY 23, 2008.
- REGULATED WETLANDS AREA WAS DETERMINED BY SCALING FROM SERVICE NEW BRUNSWICK PROPERTY MAPPING.
- ALL THAT PORTION OF LOT 2021-1 AND THE 20,000 METRE WIDE RIGHT-OF-WAY WITHIN 30.0 METRES OF THE REGULATED WETLANDS AREA IS SUBJECT TO REGULATION 90-93, WATERCOURSE AND WETLAND ALTERATION REGULATION OF THE CLEAN WATER ACT.



PLANNING APPROVAL

VALIDATION SEAL

SURVEYOR'S SEAL



PLAN OF SURVEY

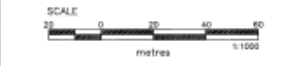
SHOWING
 TOBIQUE RIVER LEASES
 VIA ENTERPRISE ROAD
 LOT 2021-1 TO 2021-5
 PARISH OF LORNE
 COUNTY OF VICTORIA
 PROVINCE OF NEW BRUNSWICK

ACADIAN TIMBER GP INC
 PROPERTY
 PID 65208399
 (MORE THAN 2 ha REMAINING)

ACADIAN TIMBER GP INC
 PROPERTY
 PID 65208399
 (MORE THAN 2 ha REMAINING)

LEGEND

- STANDARD SURVEY MARKER PLACED
- STANDARD SURVEY MARKER FOUND
- IRON BAR FOUND (GROUND)
- IRON PIPE FOUND
- WOOD POST FOUND
- FENCE
- SURVEYED LAND BOUNDED THIS CALCULATED COORDINATE POINT
- COORDINATE POINT REFERENCE
- VALUE CALLED FOR IN DOCUMENT
- SQUARE METRES
- HECTARE
- UTILITY POLE
- GUY WIRE
- APPROXIMATE PROPERTY LINE
- UTILITY LINES
- SERVICE NEW BRUNSWICK (SMB) PROPERTY IDENTIFIER
- SMB MONUMENT
- LAND TITLES
- REGISTRY
- TIE LINE
- ORDINARY HIGH WATER MARK
- OHWM
- SURVEYED RIGHT-OF-WAY BOUNDED THIS
- ACCESS / RIGHT-OF-WAY
- 30.0 METRE SET BACK
- REGULATED WETLANDS



W.E. HODGES SURVEYS LTD.
 SURVEYING & CONSULTING ENGINEERING SERVICES
 REGISTERED WITH A.S.B.S., A.S.L.S. & A.P.S.O.B.

71 DAVIS MILL ROAD PHONE 533-4662
 DEL. DRUMMOND, NB FAX 533-4446
 E3Y 1P3 EMAIL w.hodges@w.e.hodges.com

SURVEYED BY: WAYNE E. HODGES	FILE NO.: 4307	CAD NO.: 430
SURVEY DATE: 2007/08/19 - 2007/09/20	PLAN DATE: 2007/08/27	SHEET NO.: 4302